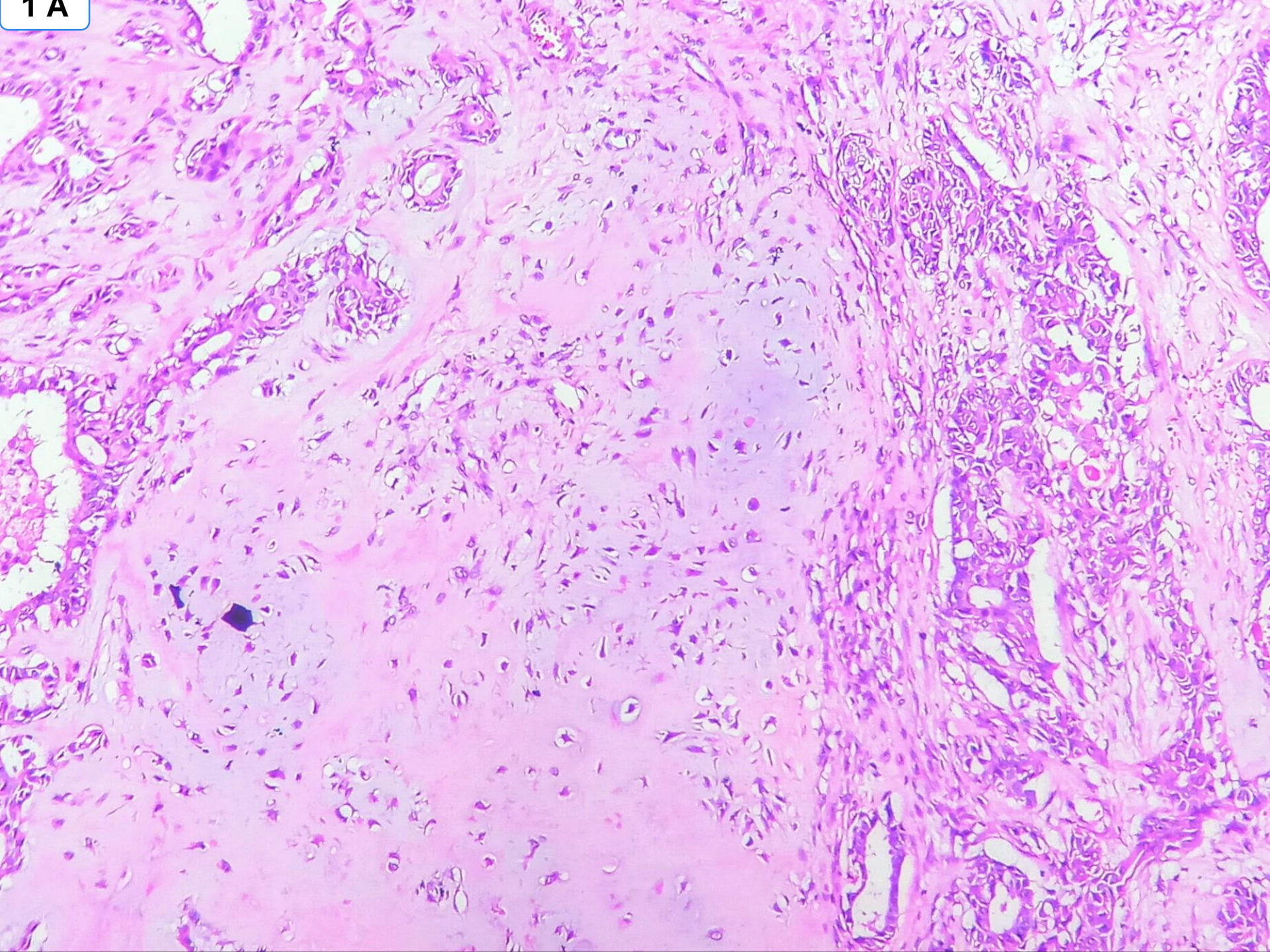
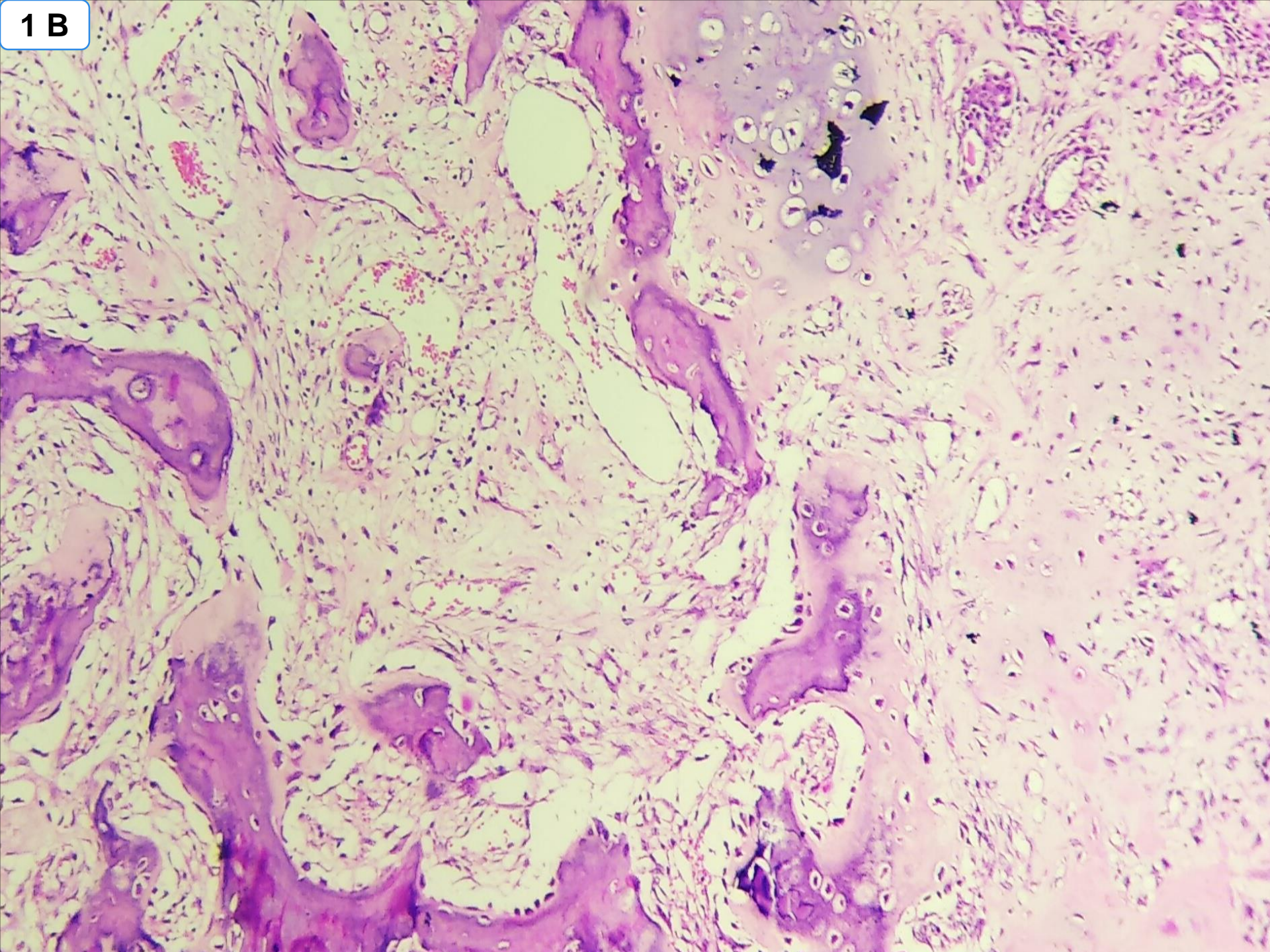


- CASE :1 : 39/F, BREAST LUMP SINCE 1 MONTH

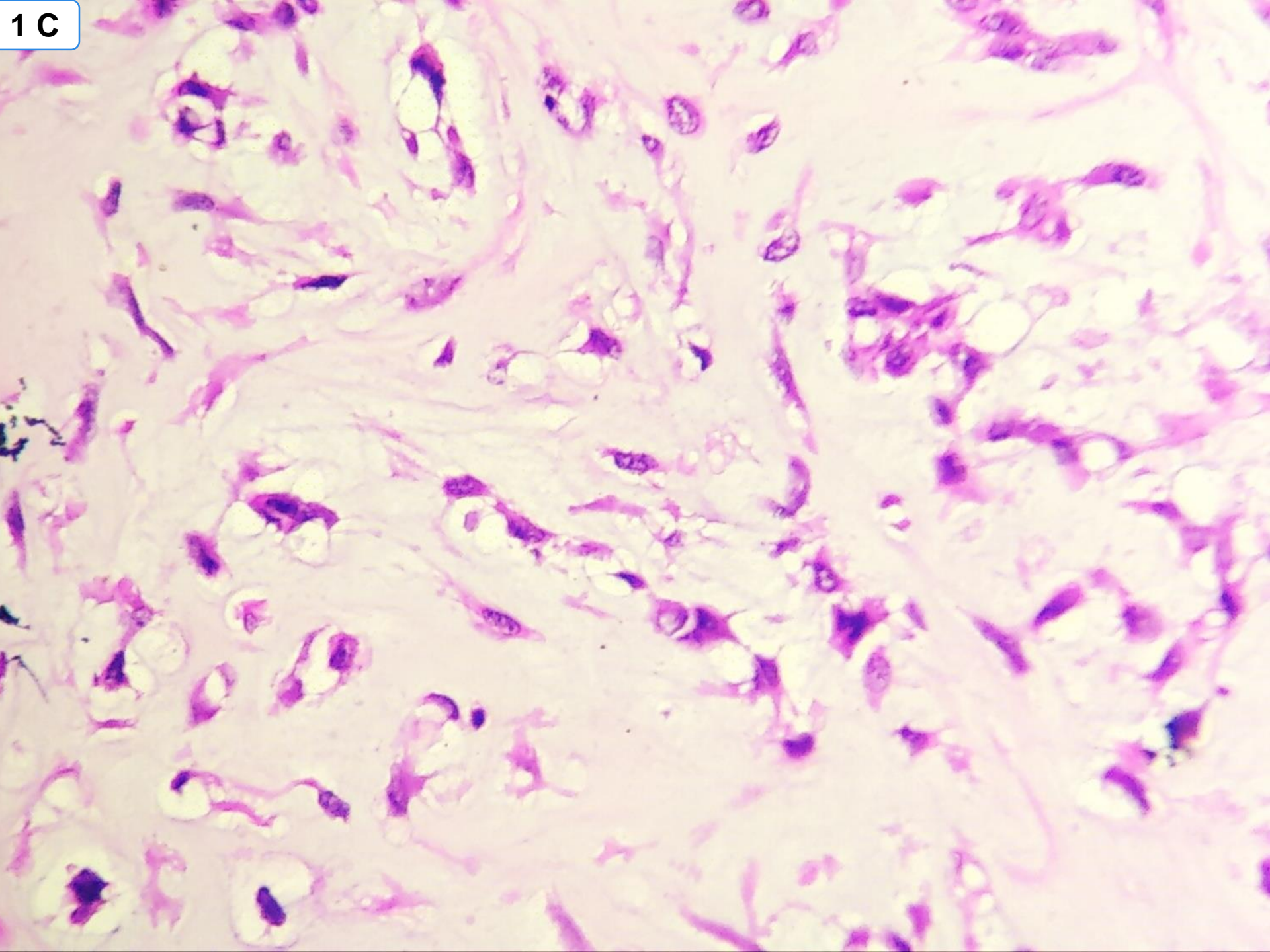
1A



1 B

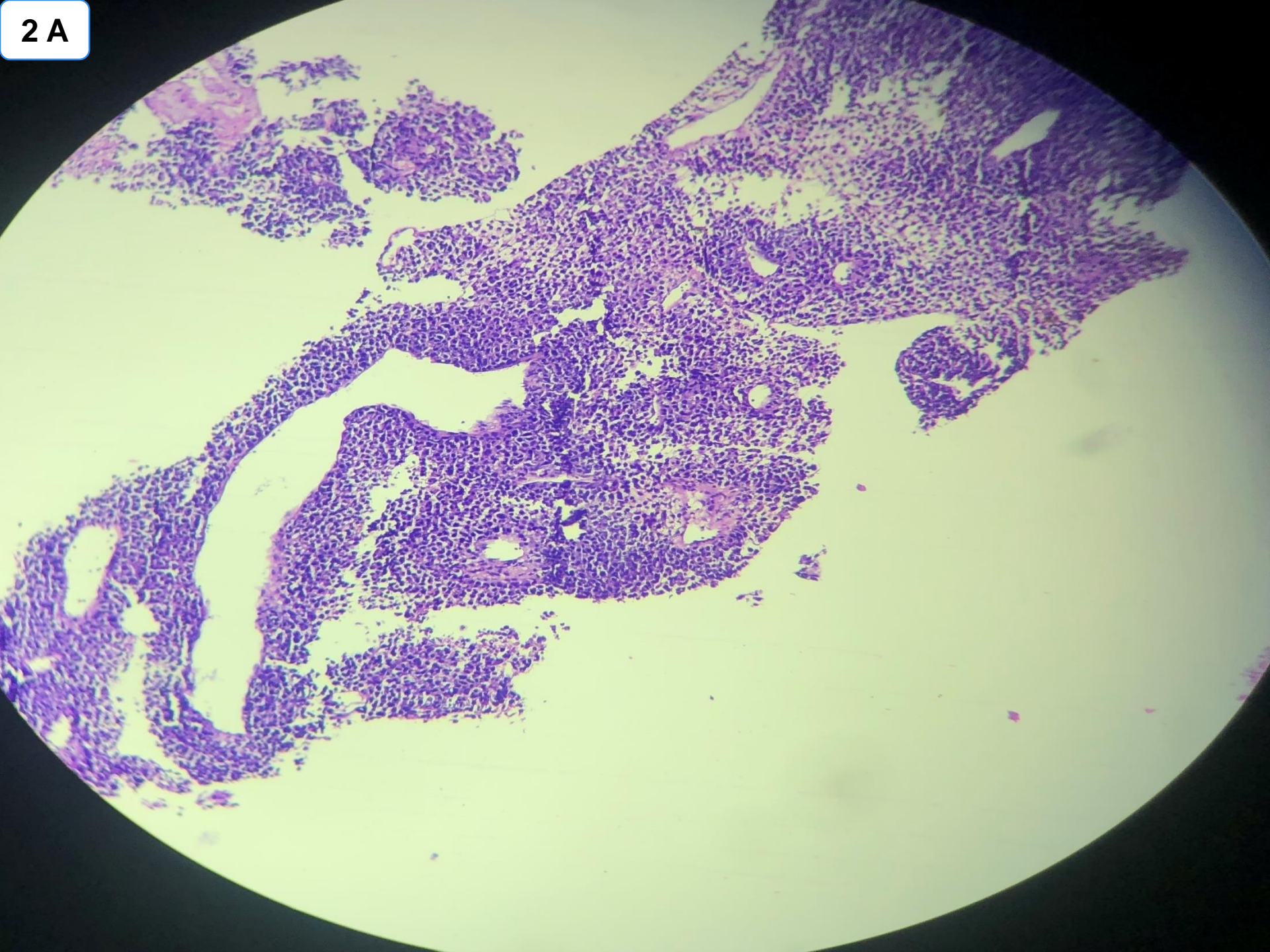


1 C

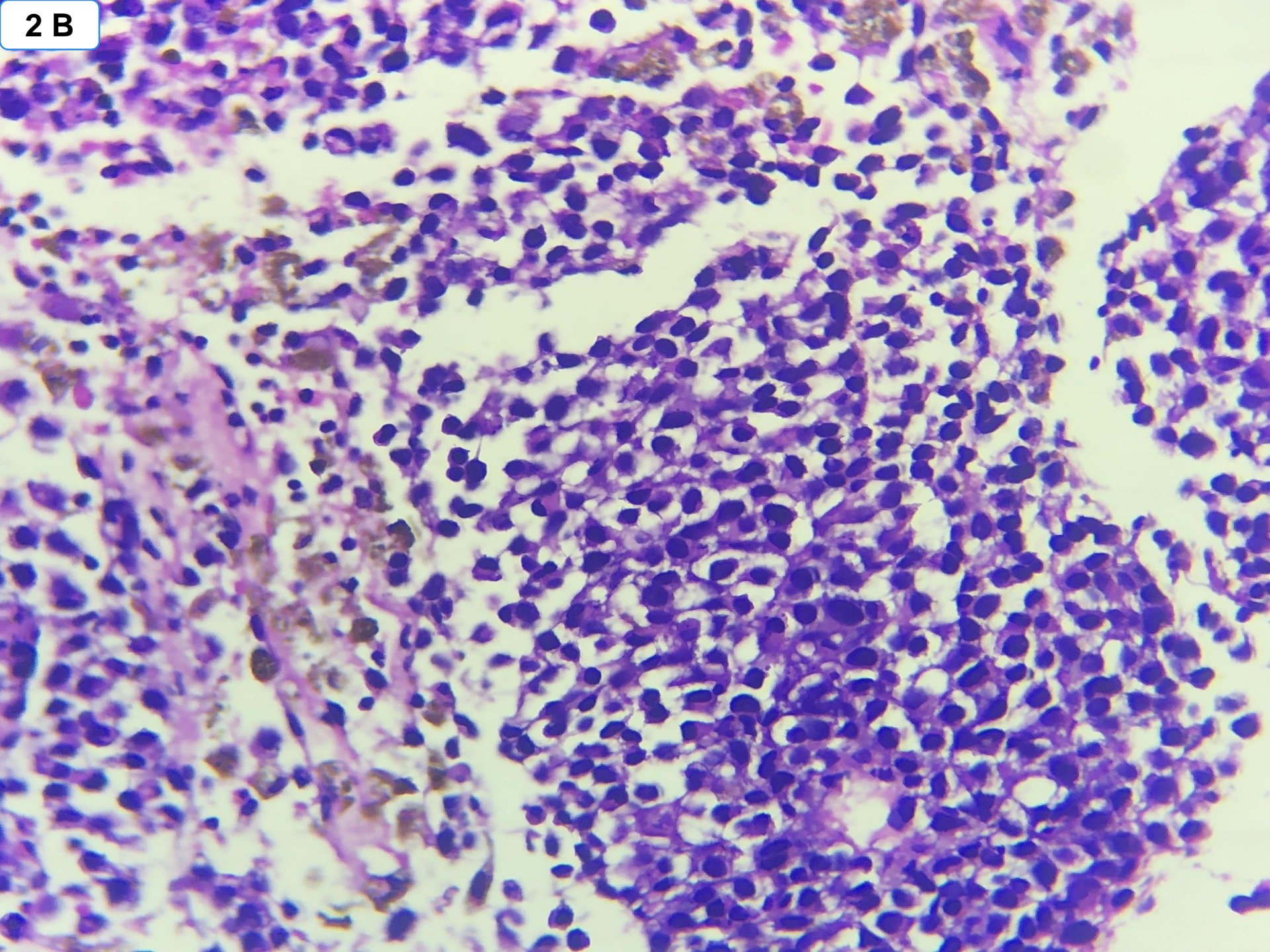


- **CASE :2: 73/M, LUNG MASS- LARGE LOBULATED NODULAR MASS ON CT SCAN.**

2 A



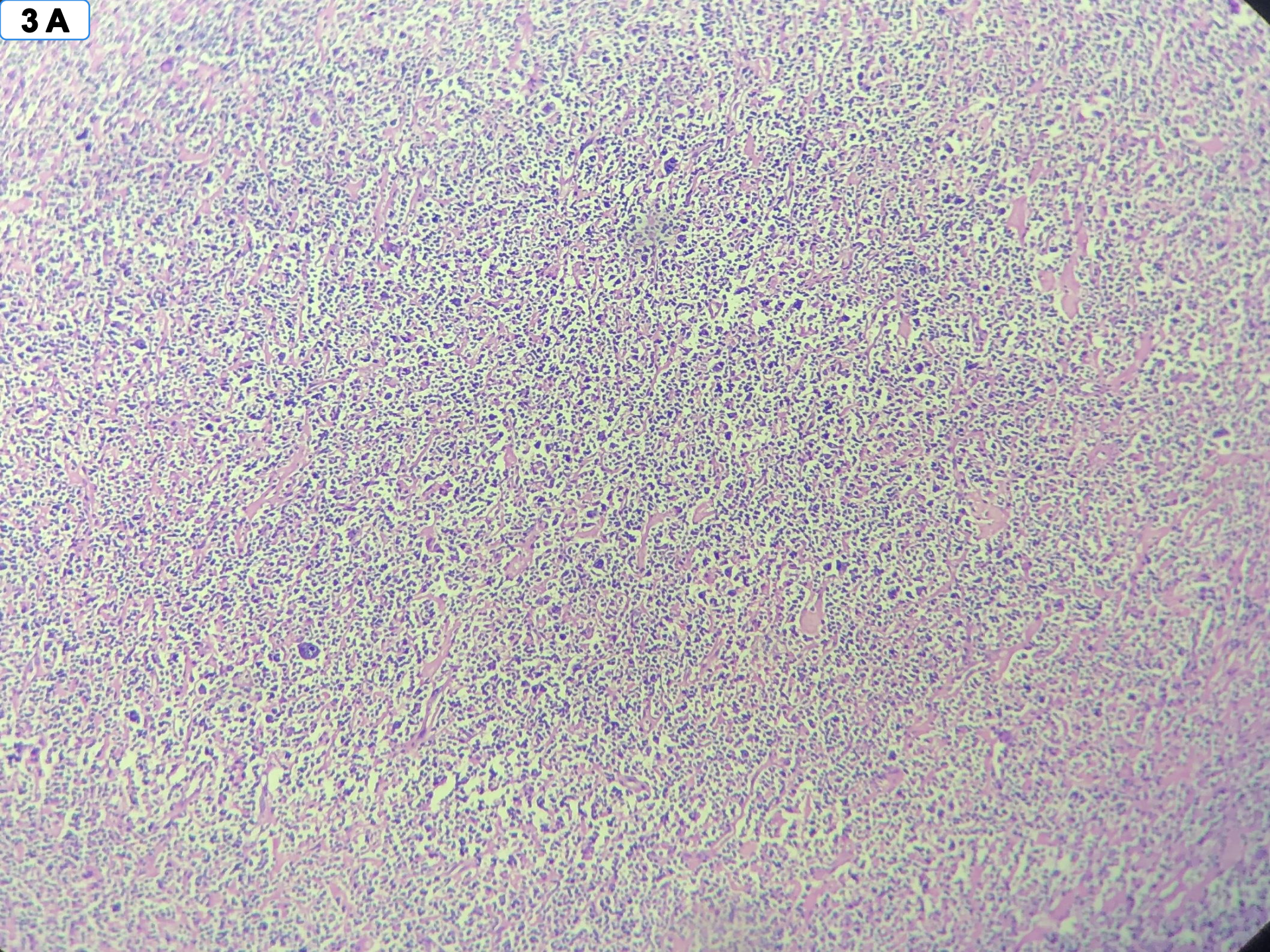
2 B



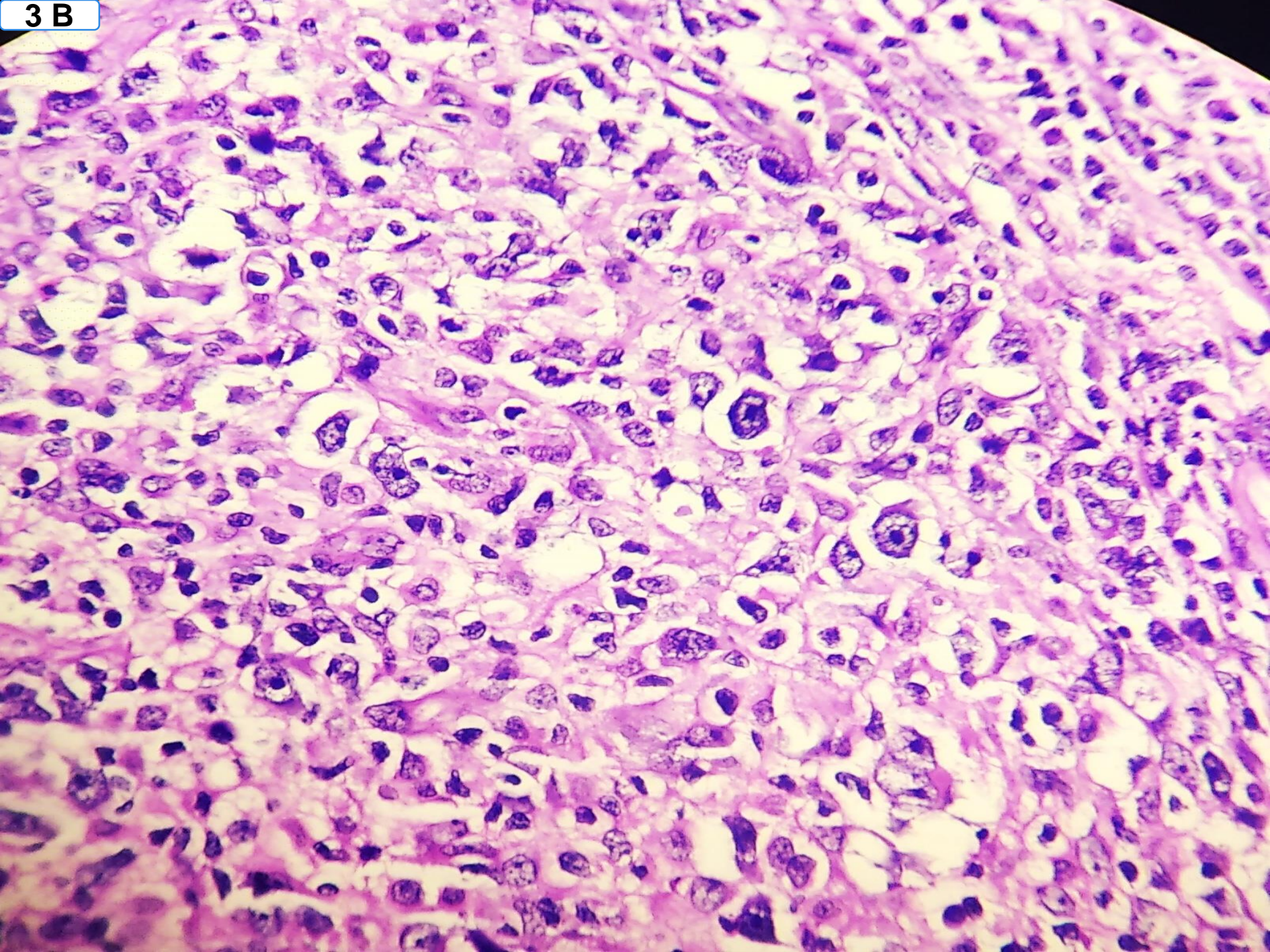
- **CASE : 3 : 59/F, CERVICAL  
LYMPHNODE, 5X4 CM SIZE ON USG**



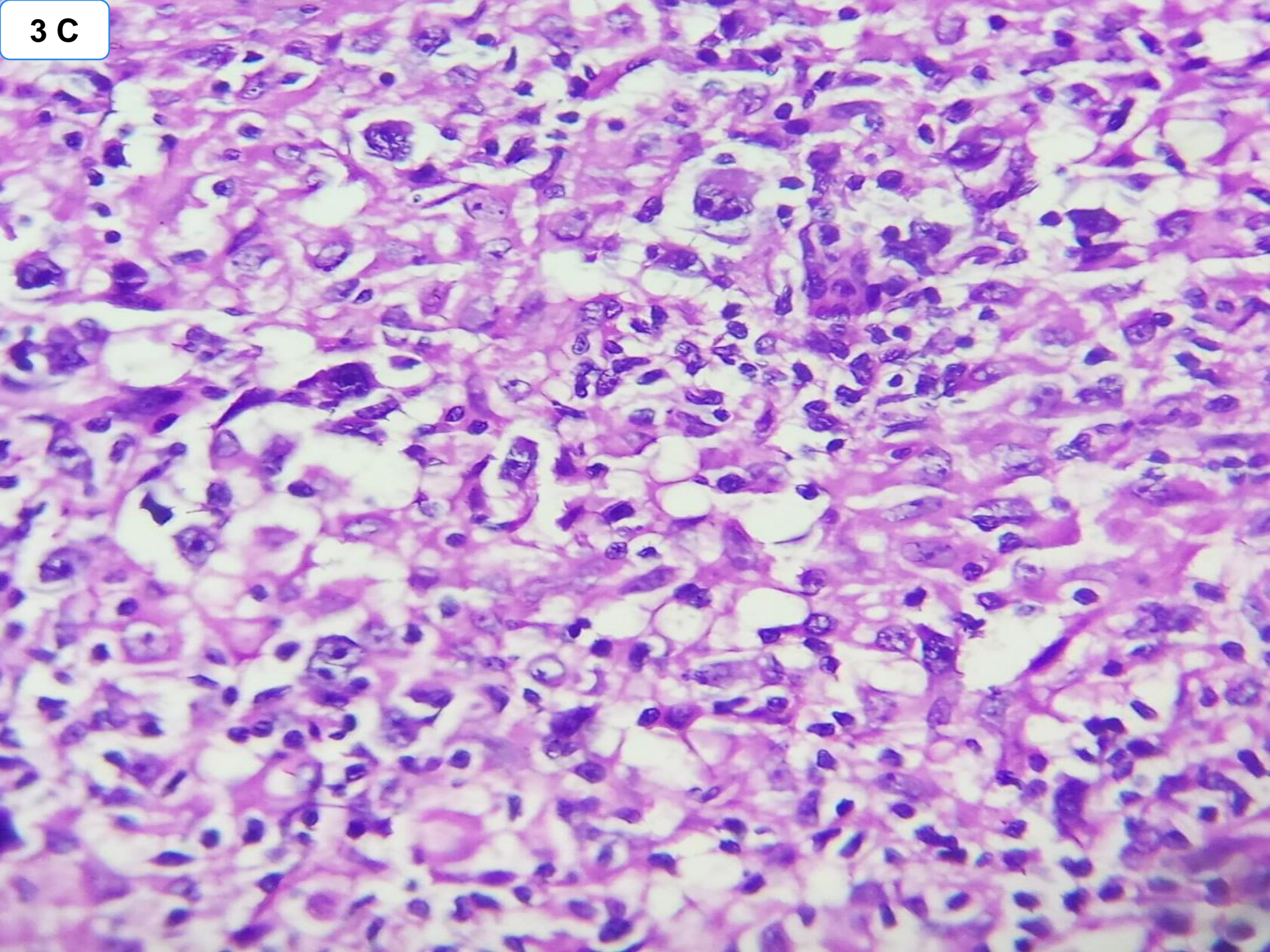
**3 A**



3 B



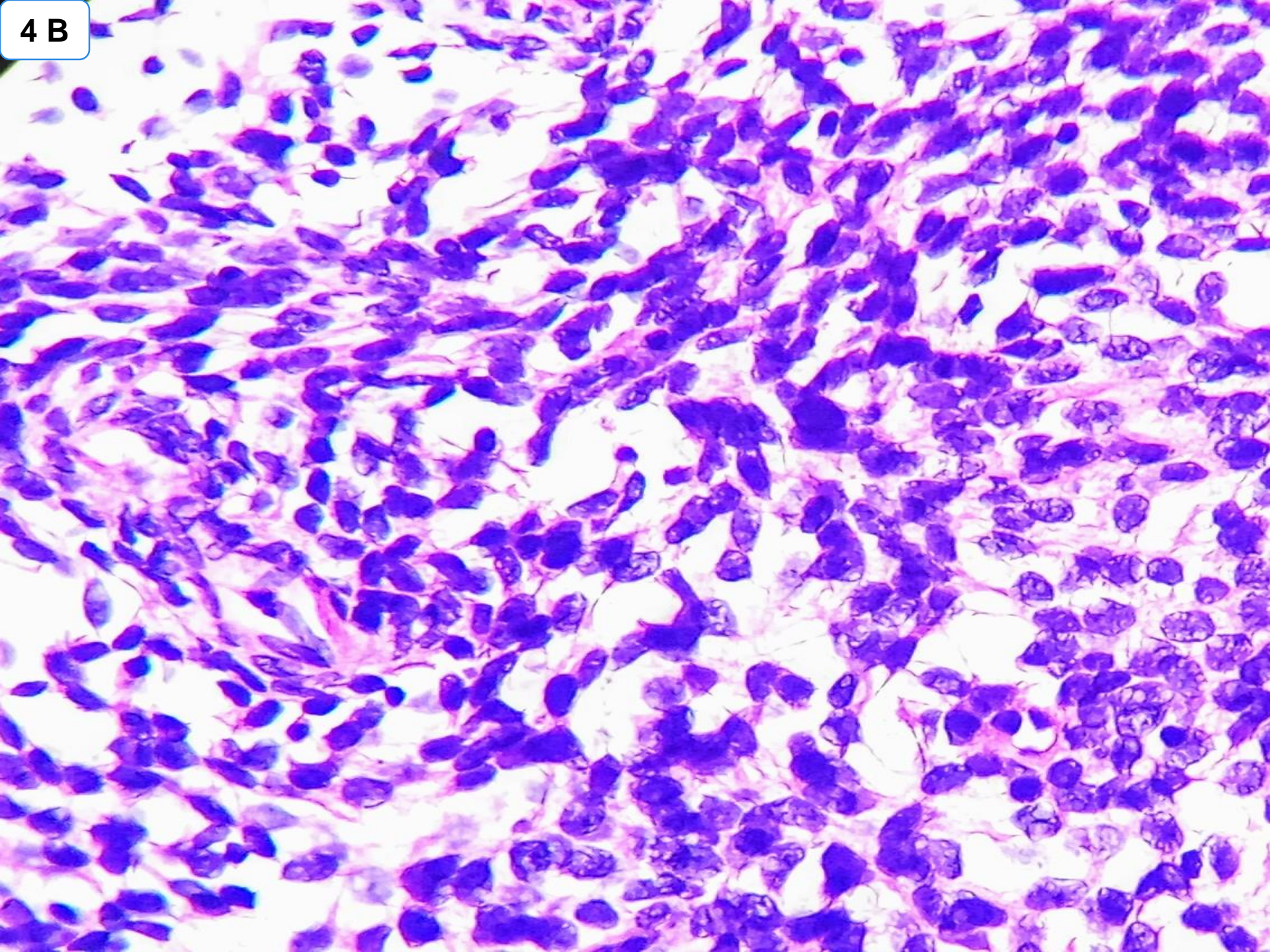
3 C



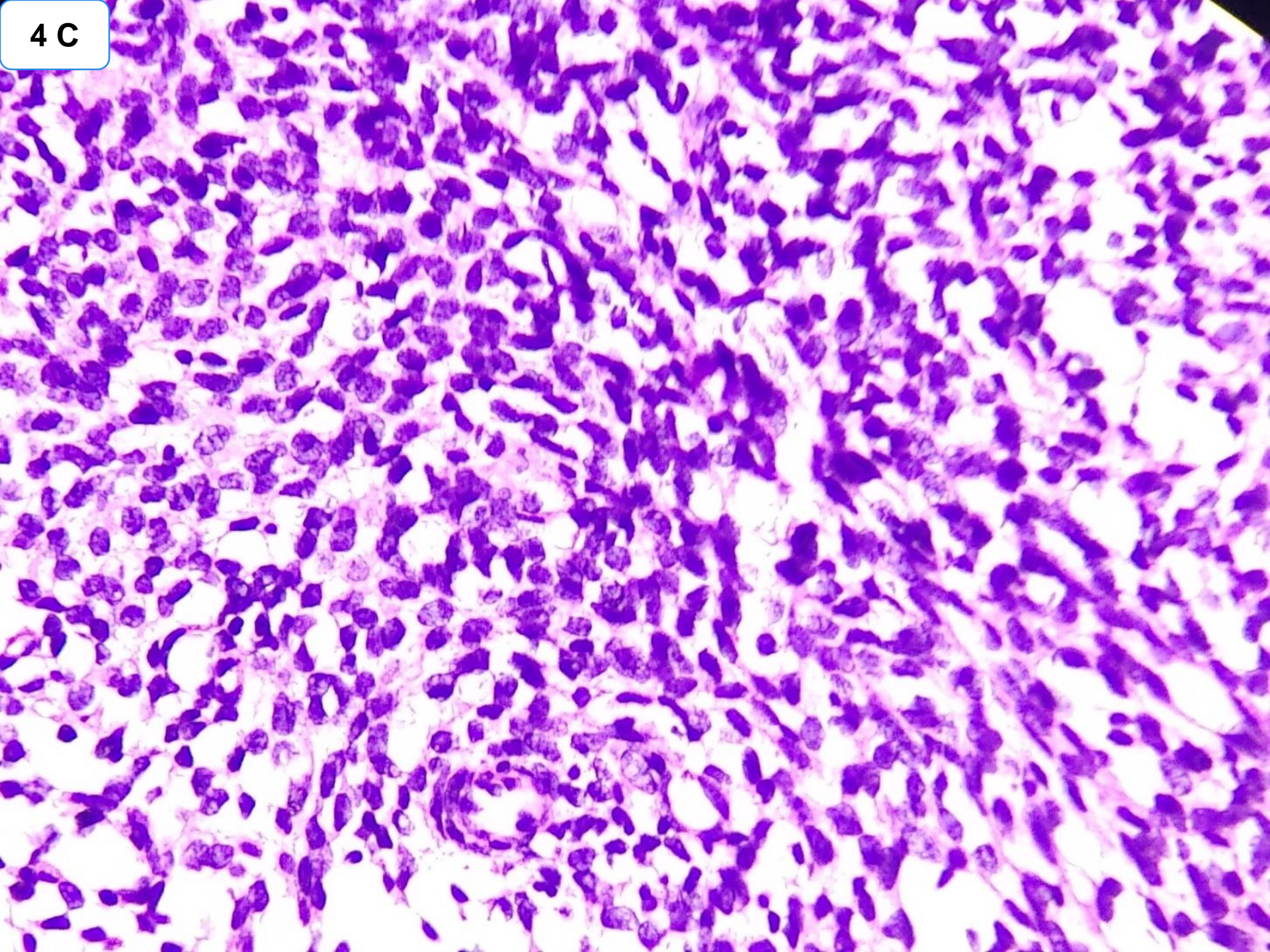
- **CASE : 4 : 45/F, LARGE MASS, 10X4 CM IN PELVIS POSTERIOR TO URINARY BLADDER AND INVADING BASE OF URINARY BLADDER**



4 B



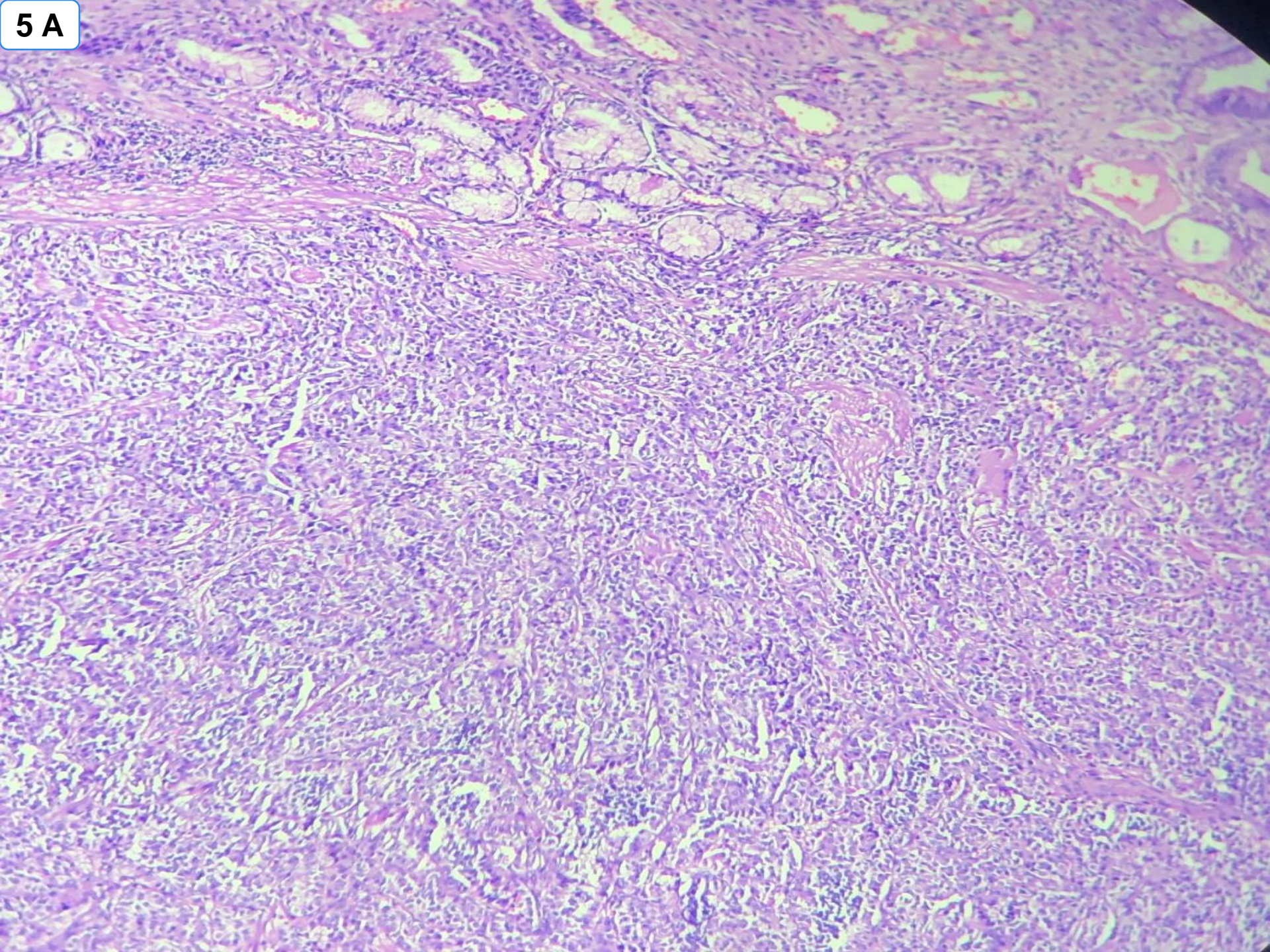
4 C



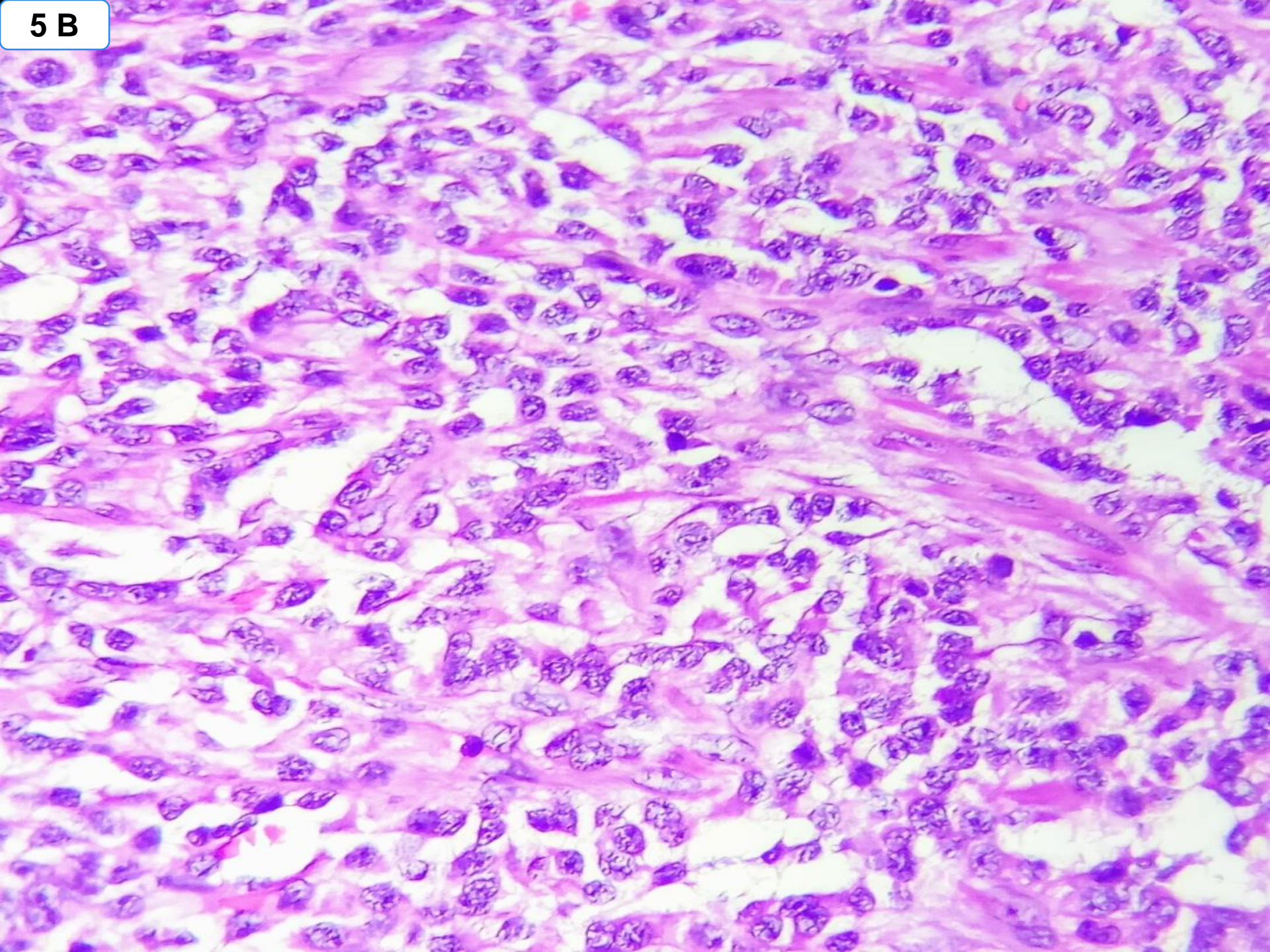
- **CASE : 5 : 55/M, MULTIPLE GASTRIC POLYPS, NONE LARGER THAN 2 CM.**



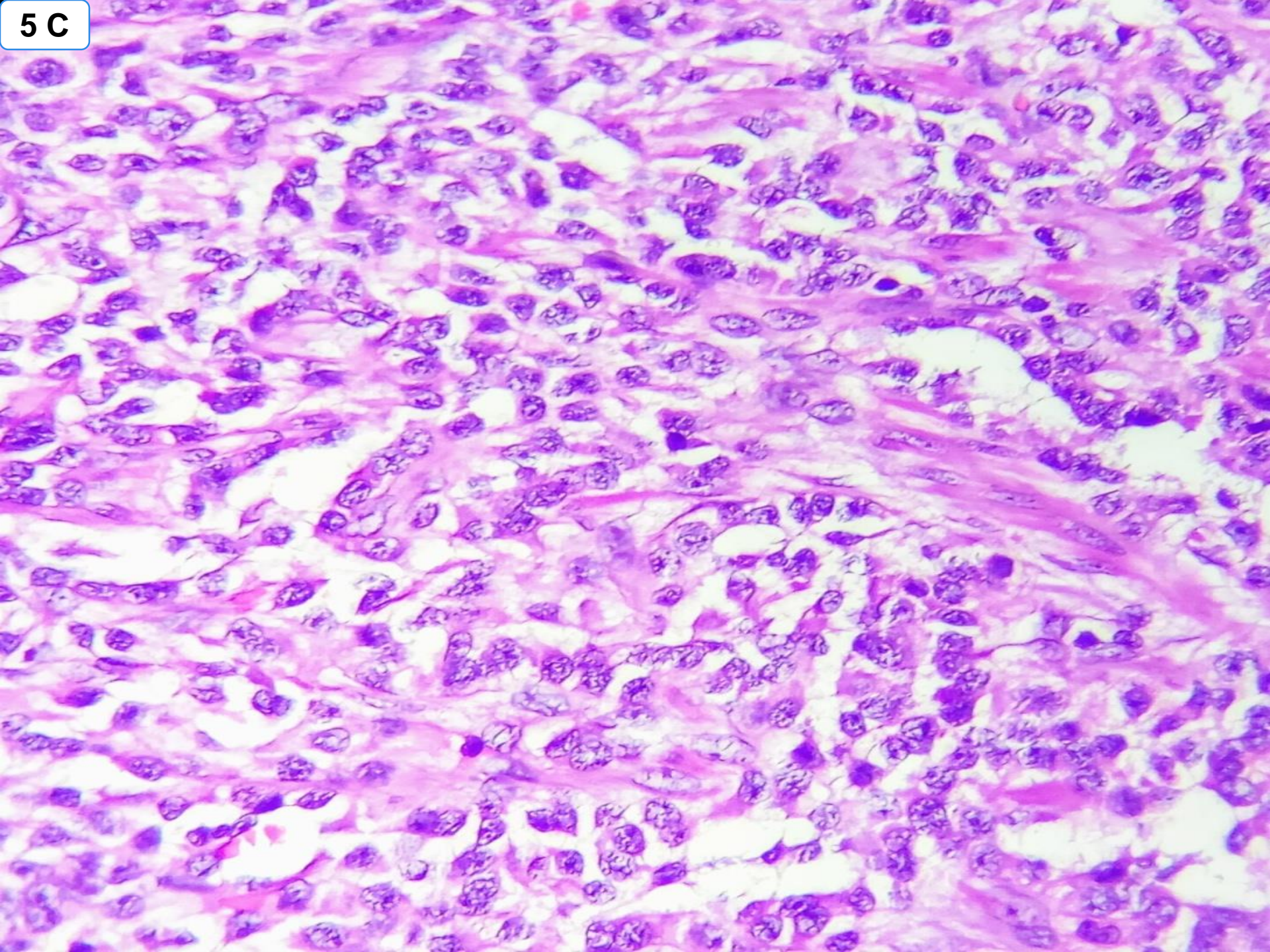
5 A



5 B

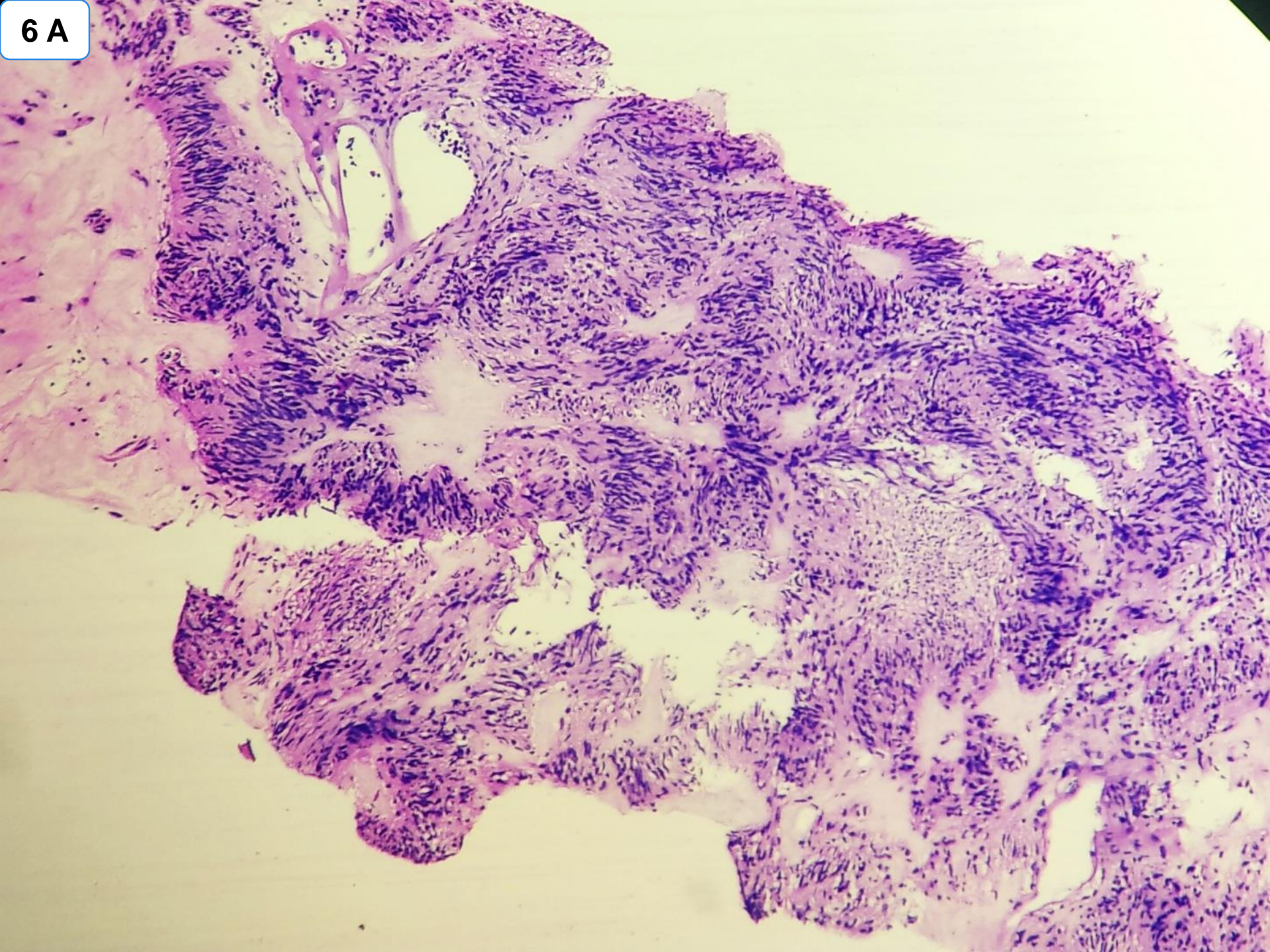


5 C

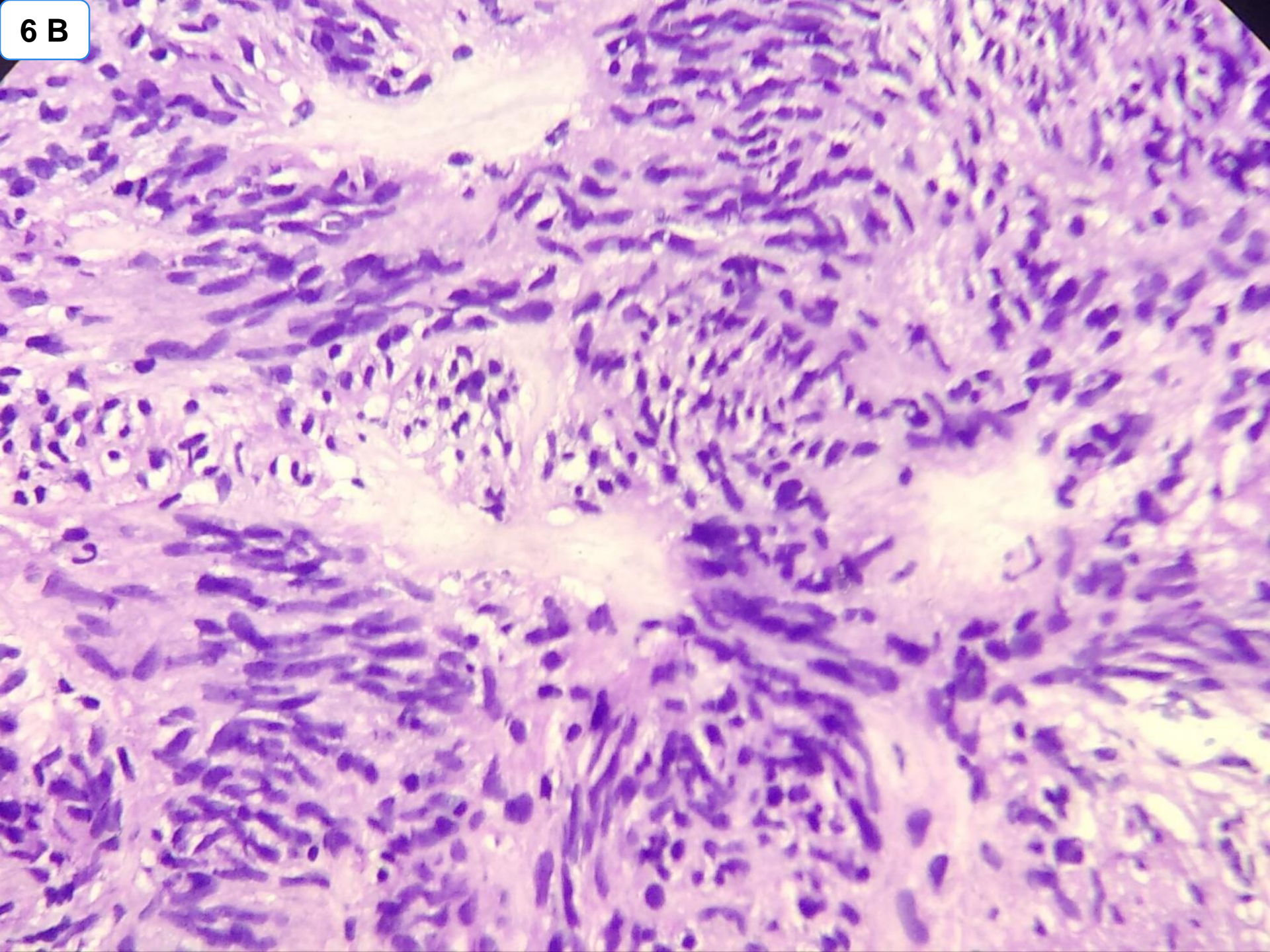


- **CASE : 6 : 65/F, CORE BIOPSY FROM  
SOFT TISSUE MASS IN LESSER SAC**

6 A

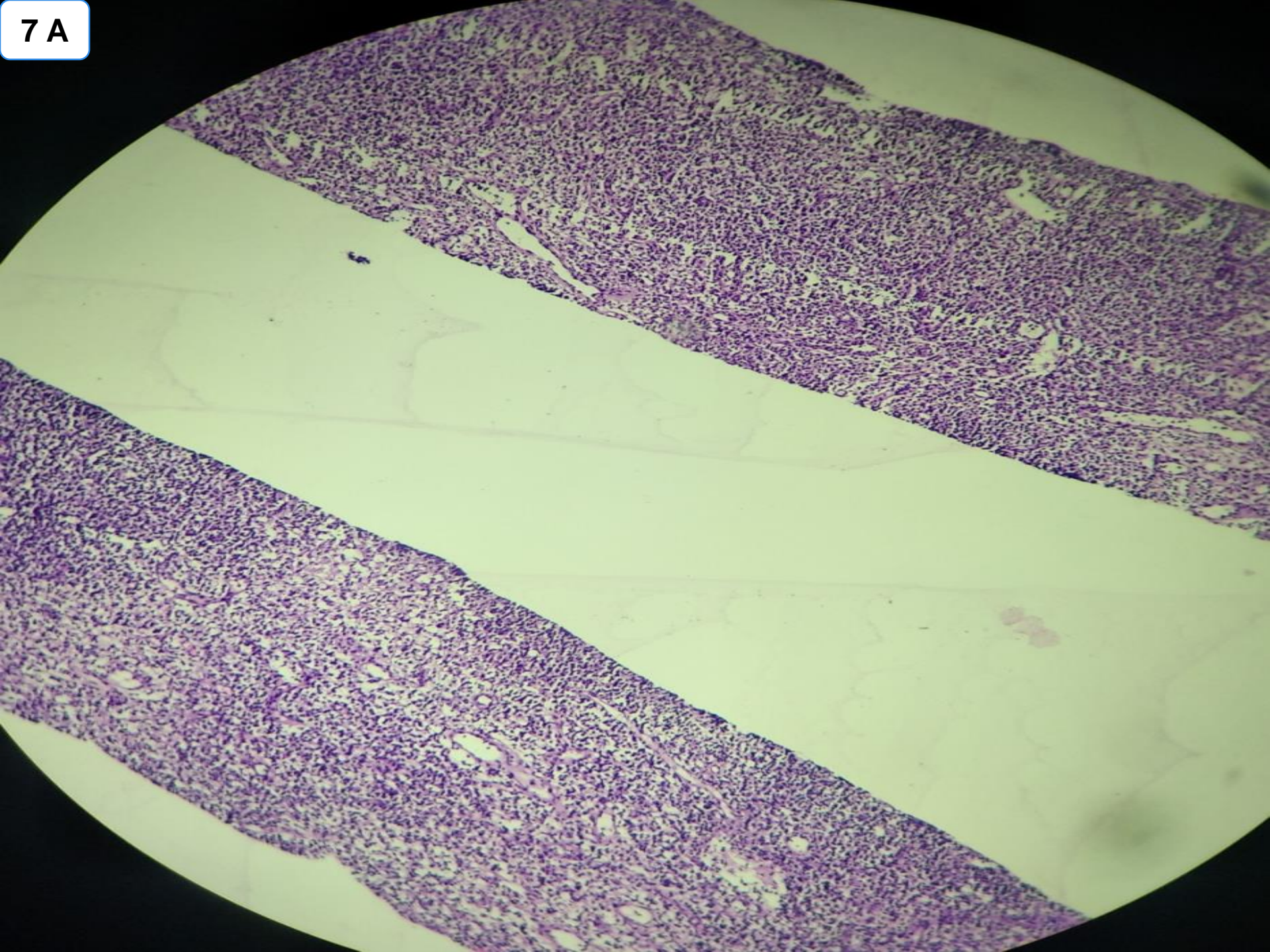


6 B



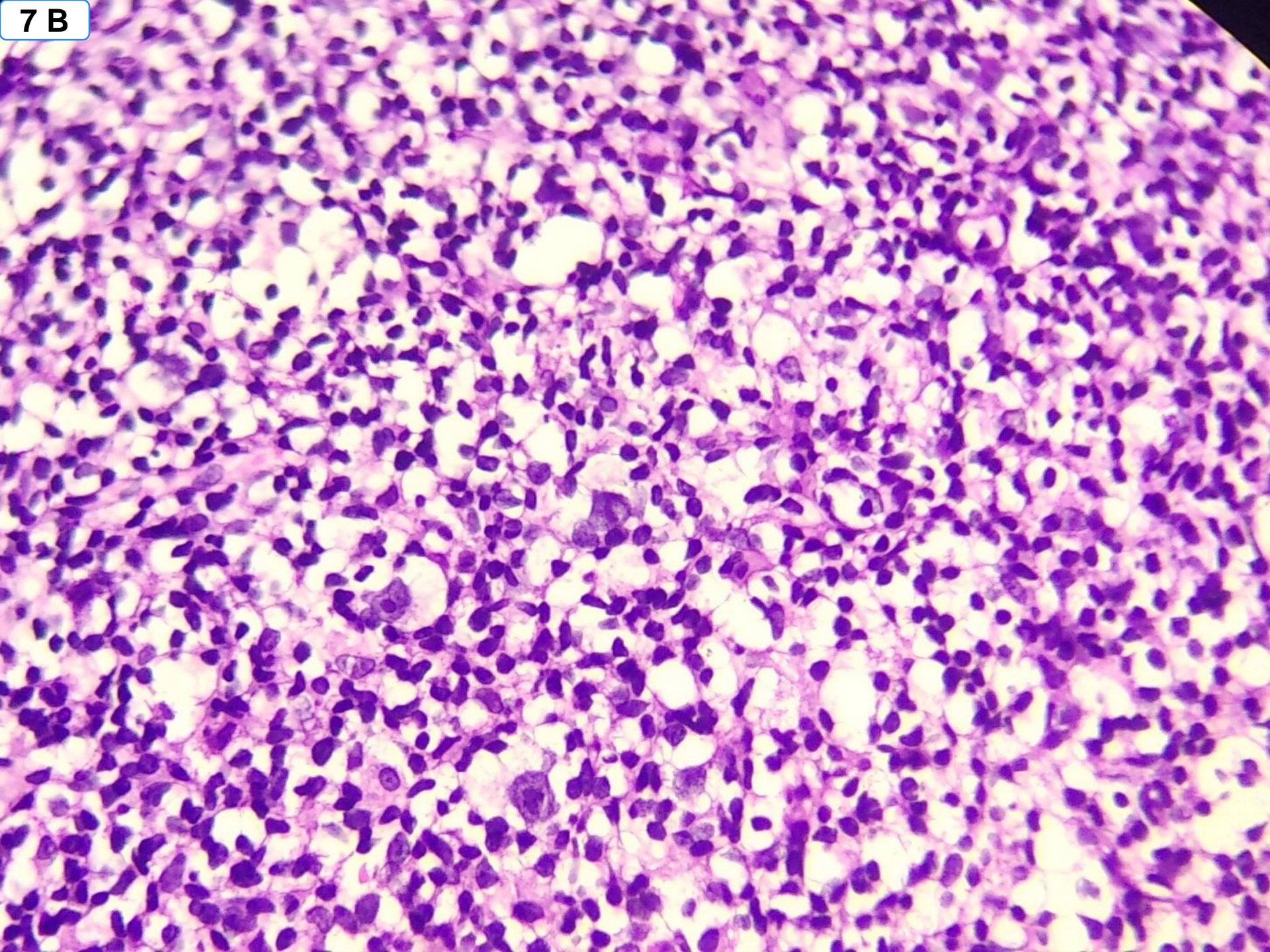
- CASE : 7 : 71/M, INGUINAL LYMPHNODE, CORE BIOPSY IN A KNOWN CASE OF CARCINOMA PROSTATE

7 A



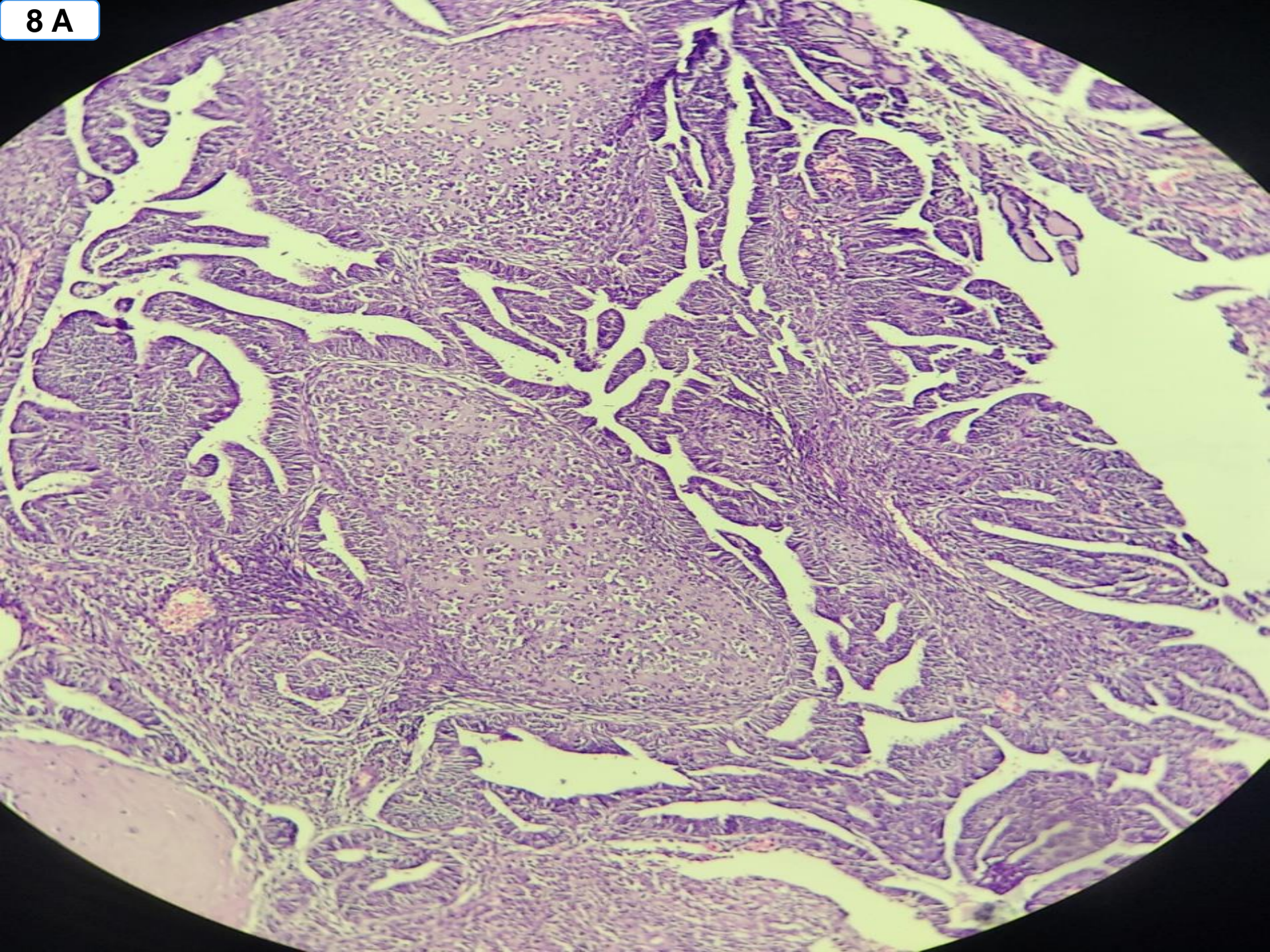


7 B

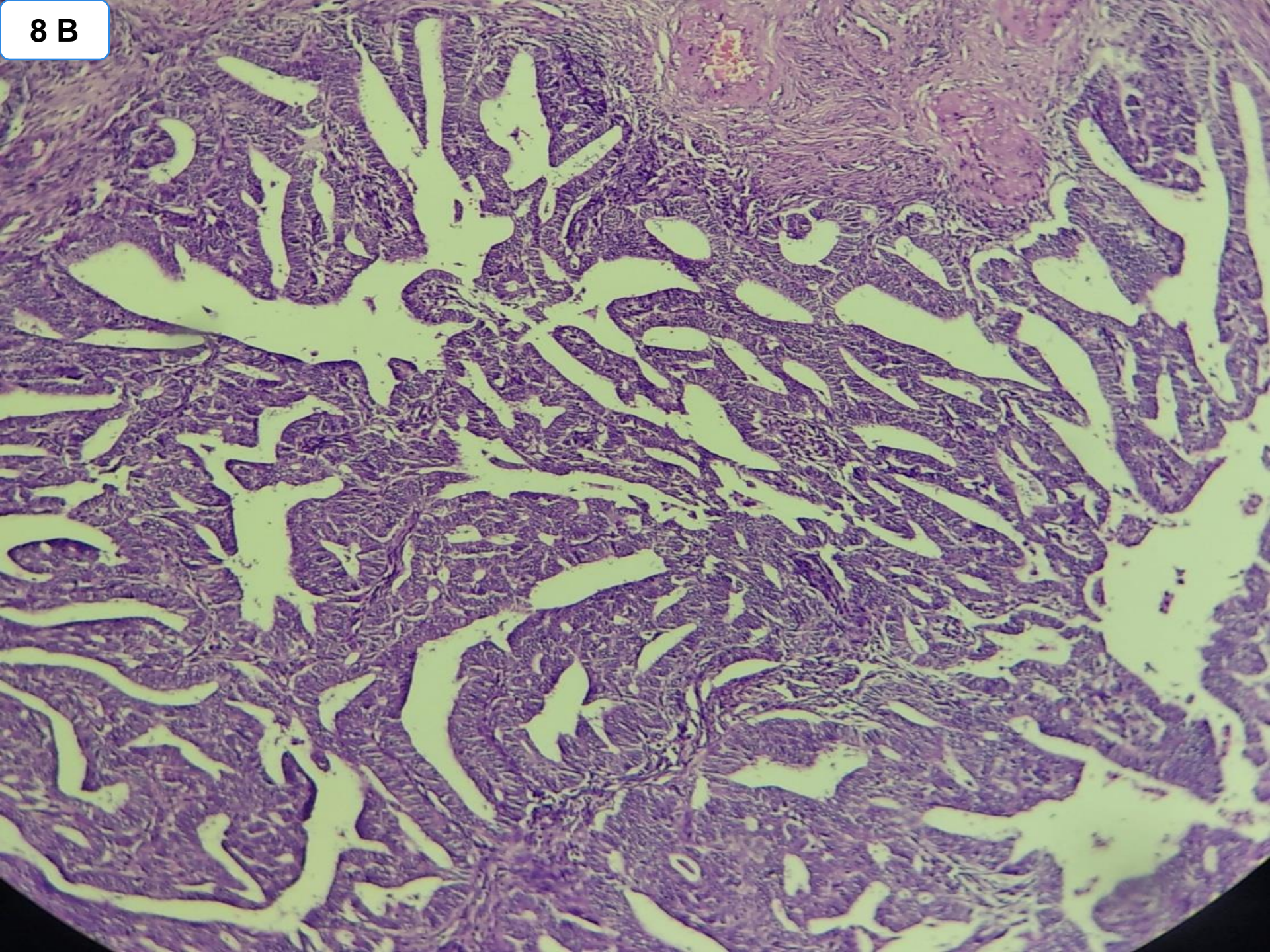


- **CASE : 8 : 58/F, POLYPOIDAL MASS IN ENDOMETRIUM.**

8 A

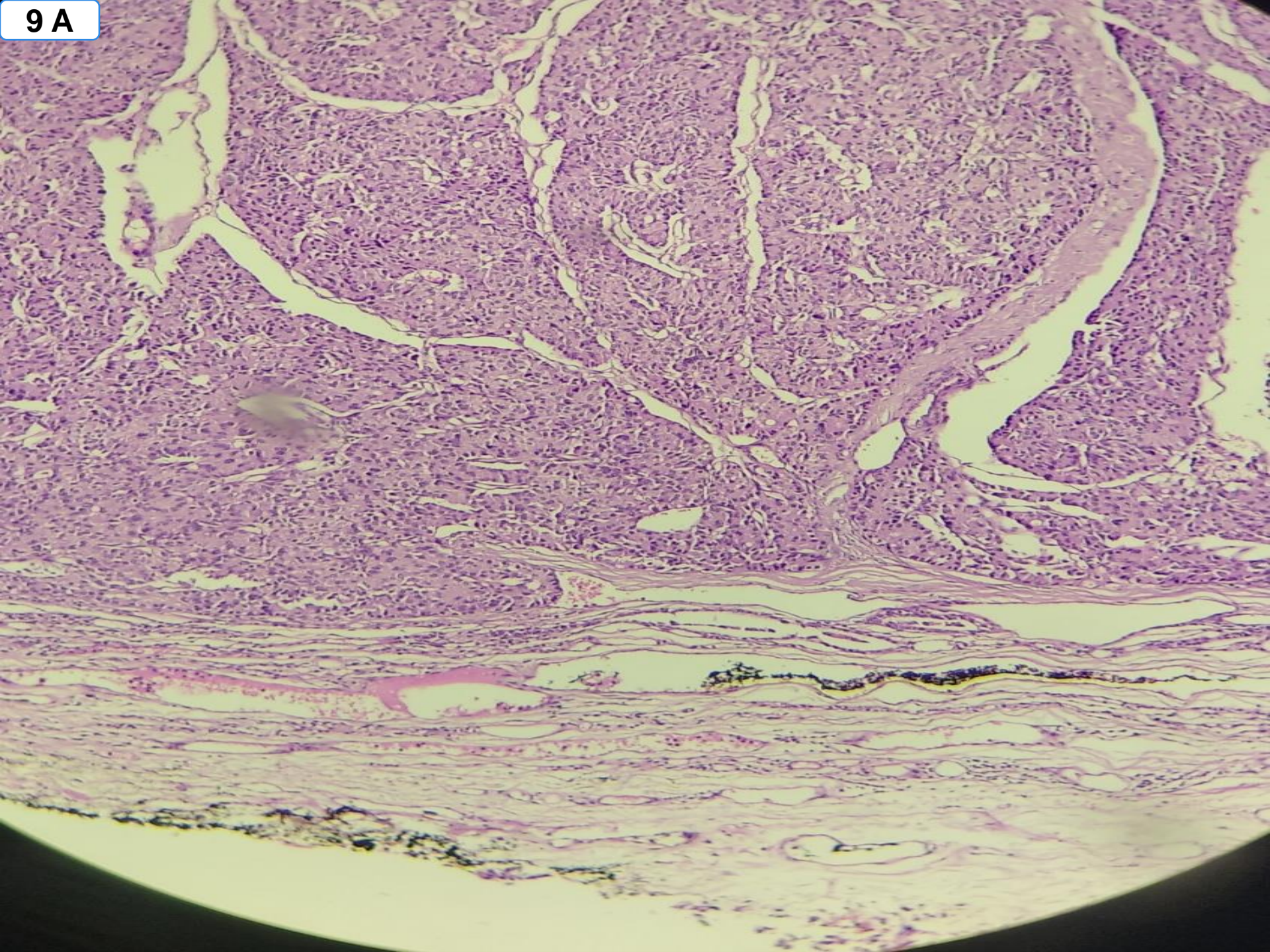


8 B

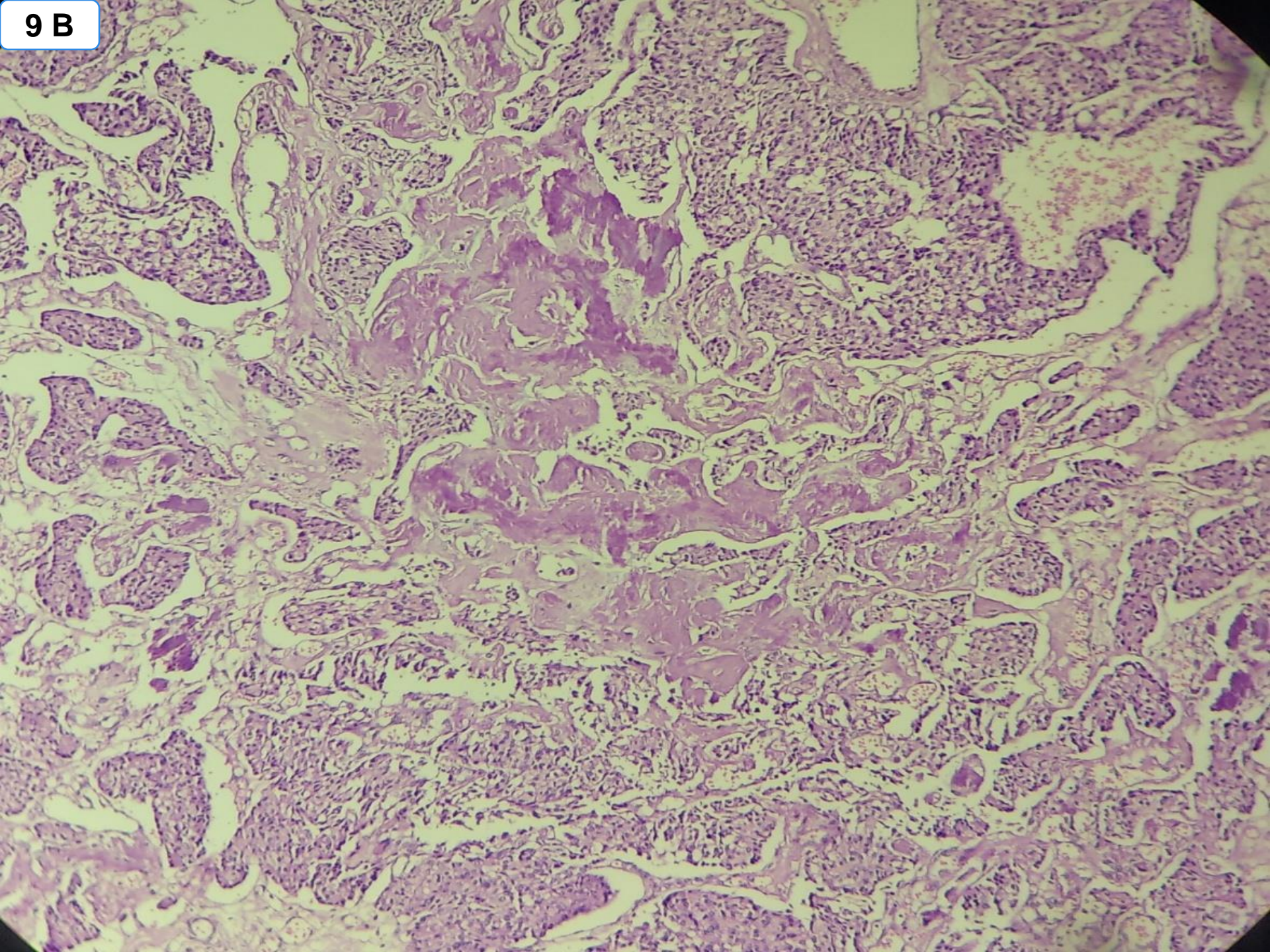


- **CASE : 9 : 14/F, LEFT LOBE THYROID SWELLING**

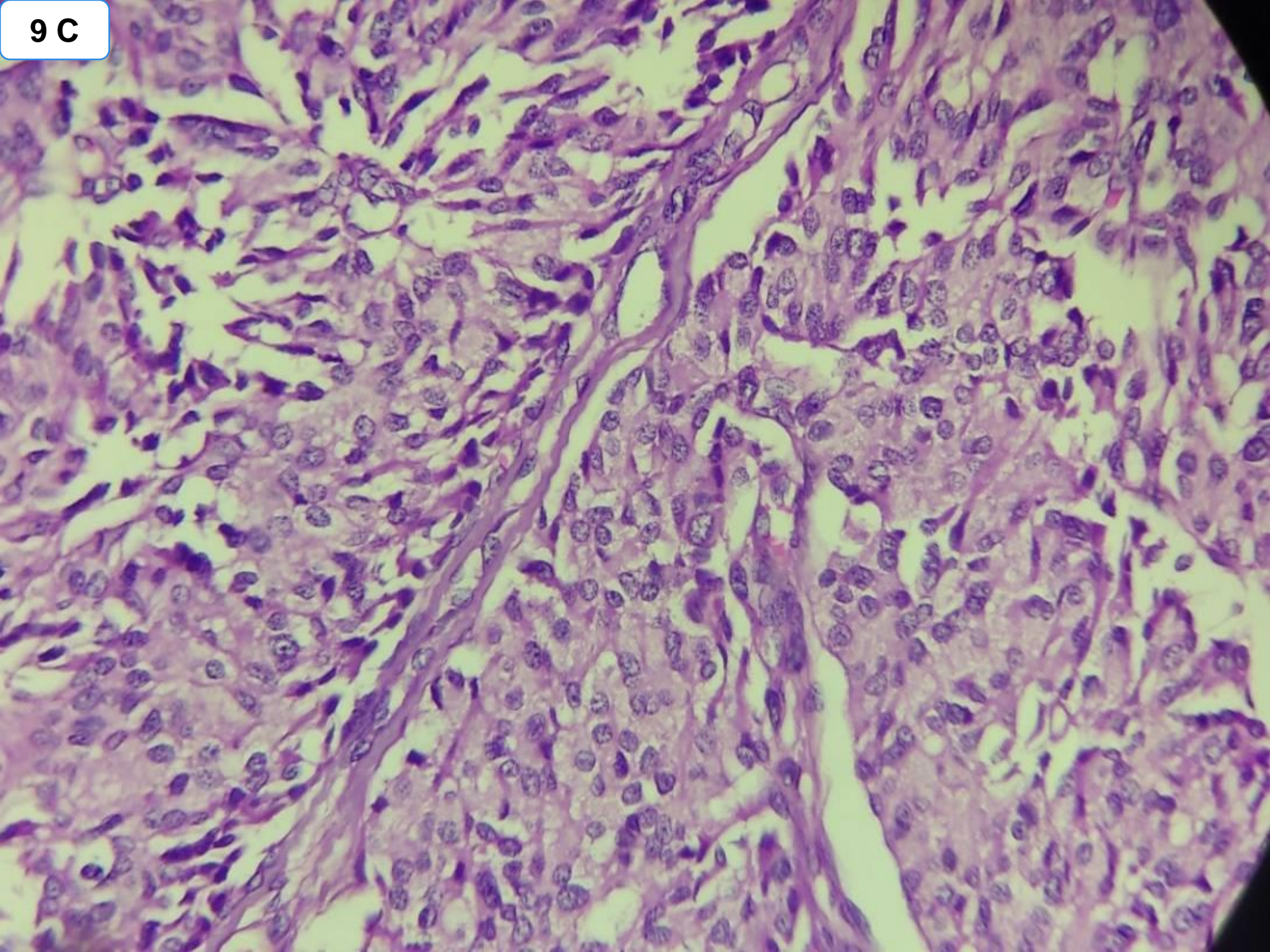
9 A



9 B



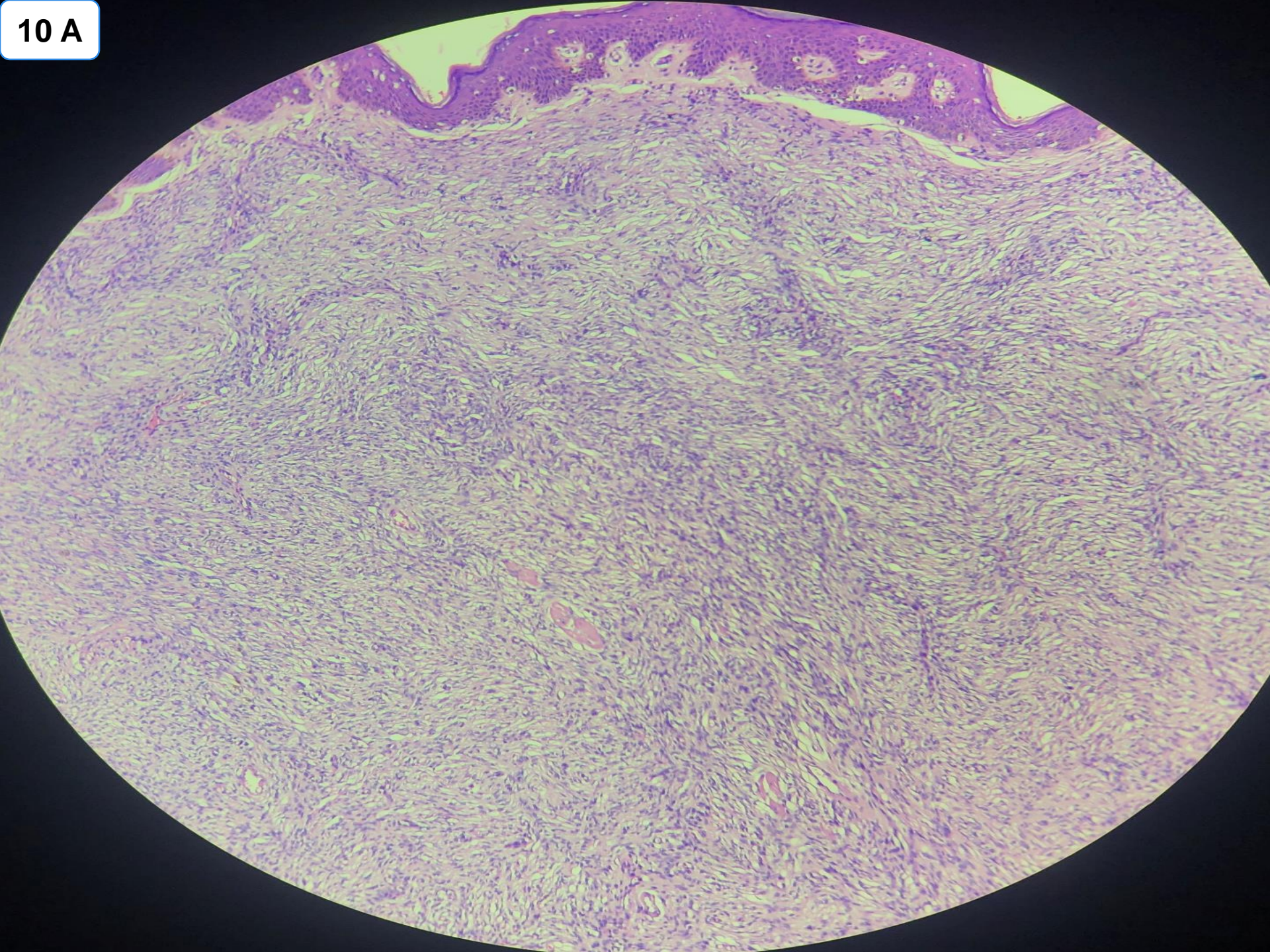
9 C



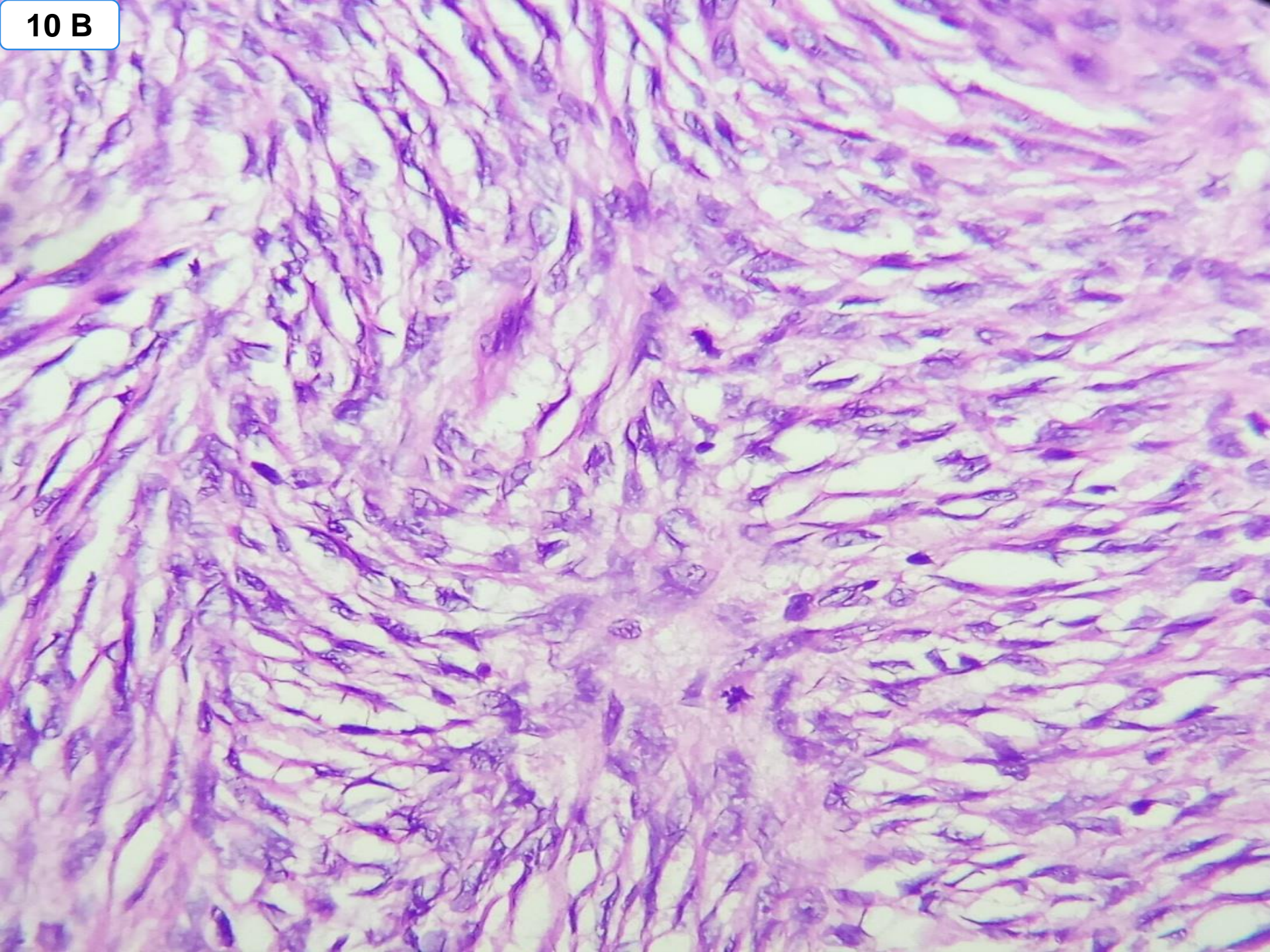


- **CASE : 10 : 21/M, GLUTEAL REGION  
MASS**

10 A



10 B



10 C

